

URBAN

UBG621

Available in left hand drainer (LHD) and right hand drainer (RHD) configuration



UBG621MB

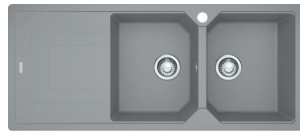
NOTE: Matte black waste included



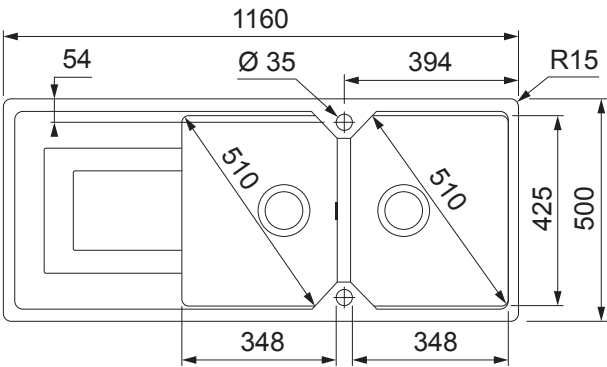
UBG621ON



UBG621PW



UBG621SG



PRODUCT INFORMATION

Installation	Topmount
Dimensions	1160 x 500mm
Cabinet Base	800mm
Bowl Size	348 x 425 x 206mm / 30L (x2)
Bowl Radius	15mm
Cut-Out Size	1124 x 464mm, cr=15
Cut-Out Template	No
Waste Outlet	Semi Integrated Waste
Overflow	Yes
Tap Holes	ø35mm
Remote Waste	No
Finish	Fragranite
Warranty	50 Years

NOTE: Cut-out dimensions are a guide only, please use the actual sink as your template.

FEATURES & BENEFITS



Food Preparation Centre



Fragranite



Fast Fix Installation



Franke Overflow



Sanitized® Surface

ALL-IN ACCESSORIES (AVAILABLE)

PACK 1



Telescopic Bridge



Chopping Board



Small Strainer Bowl



Small Storage Box



Bamboo Lid

PACK 2

All Accessories Included In Pack 1



Silicon Drainer Mat

PACK 3

All Accessories Included In Pack 2



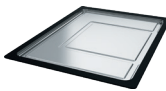
Large Strainer Bowl



Storage Container

ADDITIONAL ACCESSORIES

— Included Accessory
- - - Available Accessory



DT360
Extension Drainer



RM44
Rollamat

BARE SINK OPTION AND SOME SINK & TAP PACKAGES DO NOT INCLUDE ACCESSORIES. PLEASE CHAT TO YOUR SALES CONSULTANT FOR FURTHER INFORMATION.

LAST UPDATED: 24 JULY 2024

