

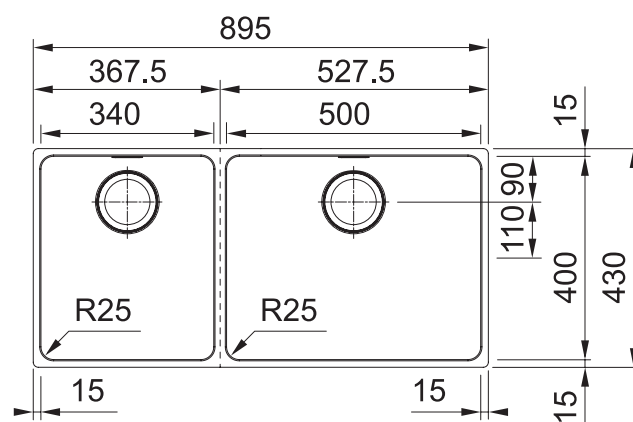
MYX220-50/34FPC MYTHOS



Available in SBL & SBR

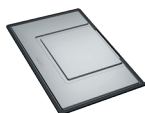
PRODUCT INFORMATION

Installation	Topmount/Flushmount/Undermount
Dimensions	895 x 430mm
Cabinet Base	1000mm
Bowl Size	500 x 400 x 200mm/40L 340 x 400 x 200mm/27L
Bowl Radius	25mm
Cut-Out Size	Template
Cut-Out Template	Yes (refer to attachment)
Waste Outlet	Semi Integrated Waste
Overflow	Yes
Tap Holes	No
Remote Waste	Yes (35mm hole required in benchtop)
Finish	Stainless Steel



1 ACCESSORIES AVAILABLE **1** ACCESSORIES INCLUDED

ACCESSORIES

1

DT 288
Extension Drainer

2

RM 081
Rollamat

3

PB 835
Push Button Remote Waste

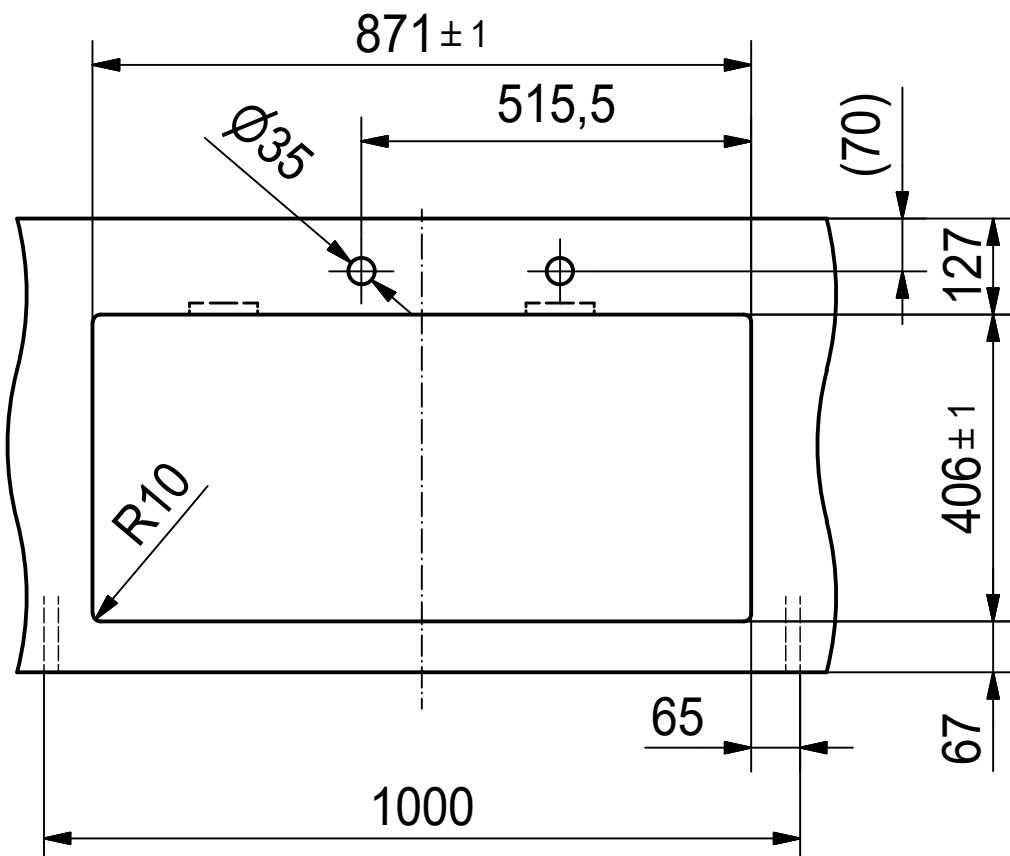
4

CBP 082
Paperstone Chopping Board

LAST UPDATED: 9 APRIL 2021

CO

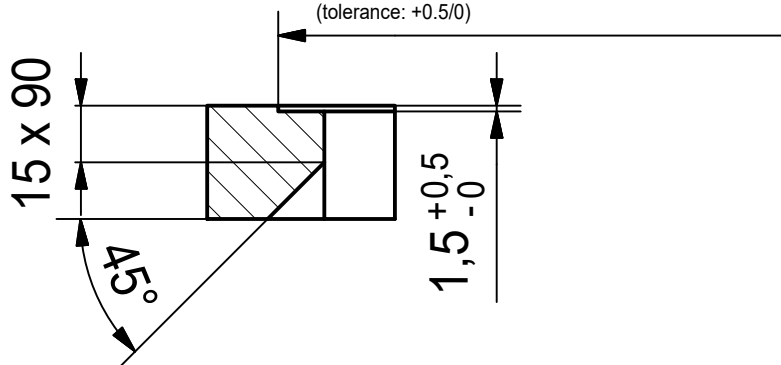
For Topmount/Flushmount



for flush fit only

895.4 x 430.4 x R10.2

(tolerance: +0.5/0)



Drawing No.	20191824_02	Revision	A
Drawn Date	16.06.2020		

These drawings and specifications are the property of Franke Technology and Trademark Ltd. and shall not be reproduced, copied or transferred to any third party without the prior written permission of Franke Technology and Trademark Ltd., Hergiswil, Switzerland

FRANKE

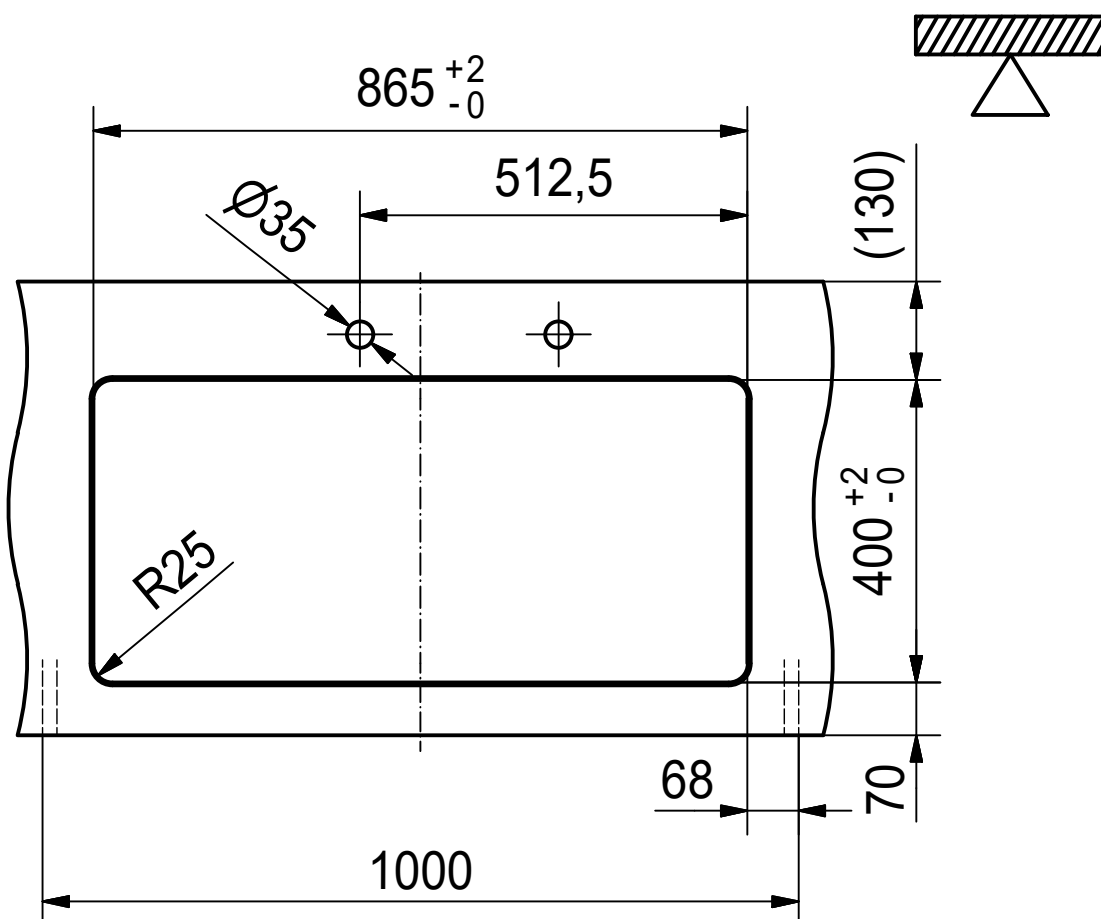
MYX 220/120-50-34 SI

Sheet Sheets

3 11

CO

For Undermount



Drawing No.	20191824_02	Revision	A
Drawn Date	16.06.2020		
These drawings and specifications are the property of Franke Technology and Trademark Ltd. and shall not be reproduced, copied or transferred to any third party without the prior written permission of Franke Technology and Trademark Ltd., Hergiswil, Switzerland			

FRANKE

MYX 220/120-50-34 SI

Sheet	Sheets
9	11