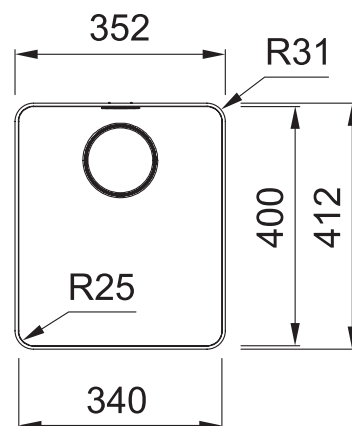


# MYTHOS

MYX210-34B



**NOTE:** May require purchase of an additional waste kit.

## PRODUCT INFORMATION

Installation	Topmount/Flushmount
Dimensions	352 x 412mm
Cabinet Base	450mm
Bowl Size	340 x 400 x 200mm/27L
Bowl Radius	25mm
Cut-Out Size	See Installation Document
Cut-Out Template	No
Waste Outlet	Semi Integrated Waste
Overflow	Yes
Tap Holes	No
Finish	Stainless Steel
Warranty	50 Years

**NOTE:** Cut-out dimensions are a guide only, please use the actual sink as your template.

## FEATURES & BENEFITS



Food Preparation Centre



18/10 Stainless Steel



Push Button Remote Waste




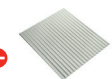
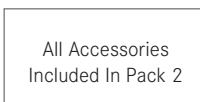




Hidden Overflow



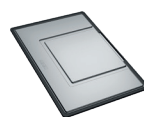
Sound Deadening Pads

## ALL-IN ACCESSORIES (AVAILABLE)

<b>PACK 1</b>	    
	Telescopic Bridge Chopping Board Small Strainer Bowl Small Storage Box Bamboo Lid
<b>PACK 2</b>	 
	All Accessories Included In Pack 1 Silicon Drainer Mat
<b>PACK 3</b>	  
	All Accessories Included In Pack 2 Large Strainer Bowl Storage Container

## ADDITIONAL ACCESSORIES

— Included Accessory  
- - - Available Accessory



**DT288**  
Extension Drainer



**RM081**  
Rollamat



**CBP082**  
Chopping Board

BARE SINK OPTION AND SOME SINK & TAP PACKAGES DO NOT INCLUDE ACCESSORIES. PLEASE CHAT TO YOUR SALES CONSULTANT FOR FURTHER INFORMATION.

LAST UPDATED: 01 JUNE 2022

**FRANKE**