



Model Code: CRQ680

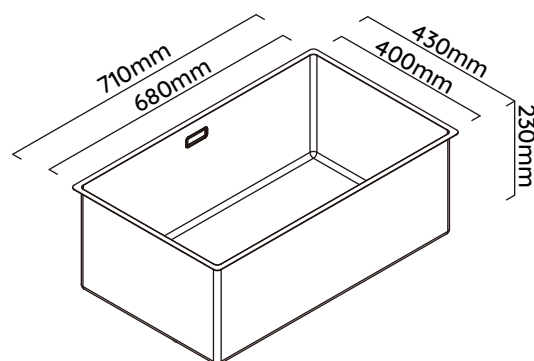
Included Accessories

 ASA400Q	 DTA16	 WKCO x 2	 ICM6 x 2
 UMG6 x 2	 6020Q/OFLOW4	 WK-OF	

Optional Accessories

 ASA04Q	 CBFR182

Dimensions



Specifications

Description	Boutique Piazza 710 x 430
Overall Sink Size	710mm x 430mm x 230mm deep
Bowl Dimensions	680mm x 400mm x 230mm deep
Drainer Length	N/A
Technic	Fabrication
Material	1.2mm Stainless Steel SUS304

Installation

Fixings	Inset & Undermount clips supplied
Template	Supplied
Min Cabinet Size	800mm
Waste Holes	1 x 90mm round Compatible with waste disposal
Sealing Strip	N/A

Plumbing

Waste Fittings	1 x (90mm x 2") basket wastes included
Overflow	Supplied

Packaging

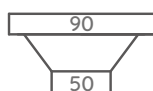
Carton Type	Eco packaging & Individual carton
Gross Weight	16.6Kg
Carton Size	790mm x 325mm x 535mm
Pack QTY	1

SURFACE FINISH



SB Mirror

WASTE KIT

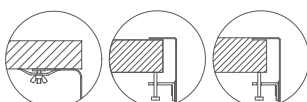


MATERIAL



Stainless Steel

INSTALLATION OPTIONS



Undermount Inset Flush-mount

PROFILE



Corner

Abey are Australia's leaders in sinkware, designing and manufacturing to the world's highest quality specifications as well as sourcing and bringing you Europe's very best, leading edge designs – practical, affordable, inspirational, stylish, timeless or cutting edge. When you buy an Abey stainless steel sink you receive the highest quality and a 25 year warranty. Abey and the manufacturer are continually seeking ways to improve the design specifications, aesthetic and production techniques of the products. As a result, alterations to the specifications and dimensions of the products and designs occur continually.